



UBM Plus
Installing to Windows 10 (32 bit)

www.accutome.com

3222 Phoenixville Pike, Bldg 50 | Malvern, PA 19355 USA | info@accutome.com
800.979.2020 | 610.889.0200 | F: 610.889.3233 | European Office +31 (0) 485-350300

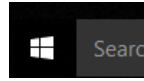


Installing to Windows 10 (32 bit)

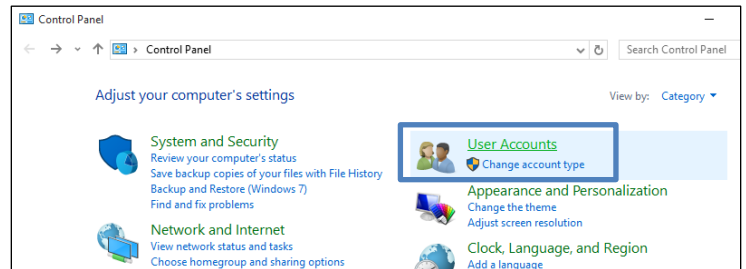
1. Pre-installation setting.

(Turn off user account controls)

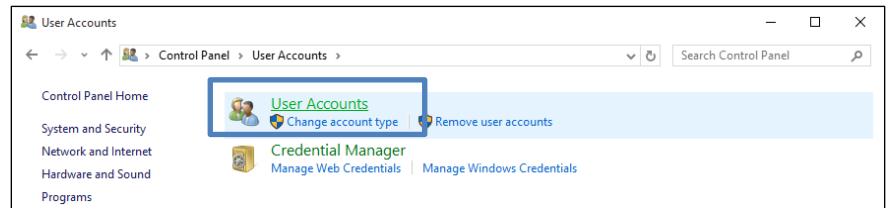
- Control Panel
 - At the desktop, right click on the Windows Start Icon and select **“Control Panel”**



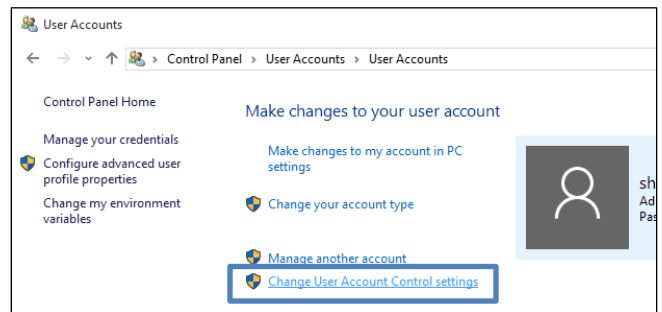
2. Select **“Users Accounts”**.



3. Select **“User Accounts”** again.

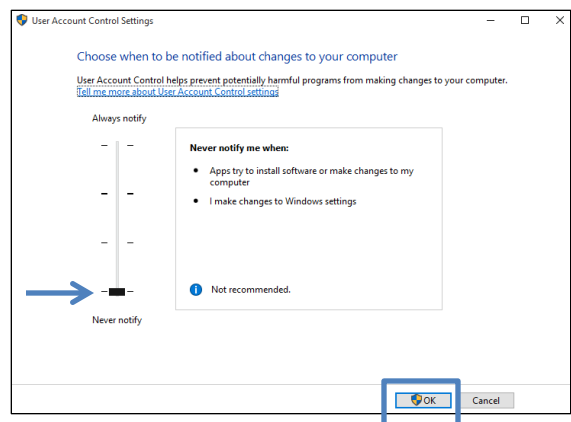


4. Select **“Change User Account Control Settings”**.



5. Drag slide-bar to **“Never Notify”**.

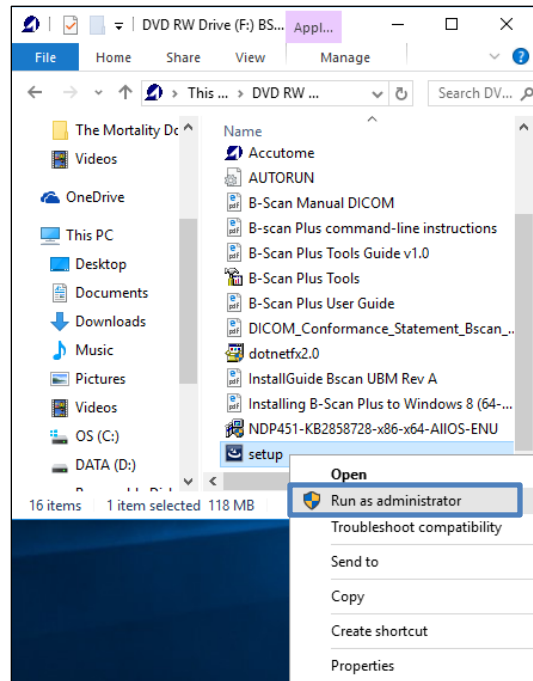
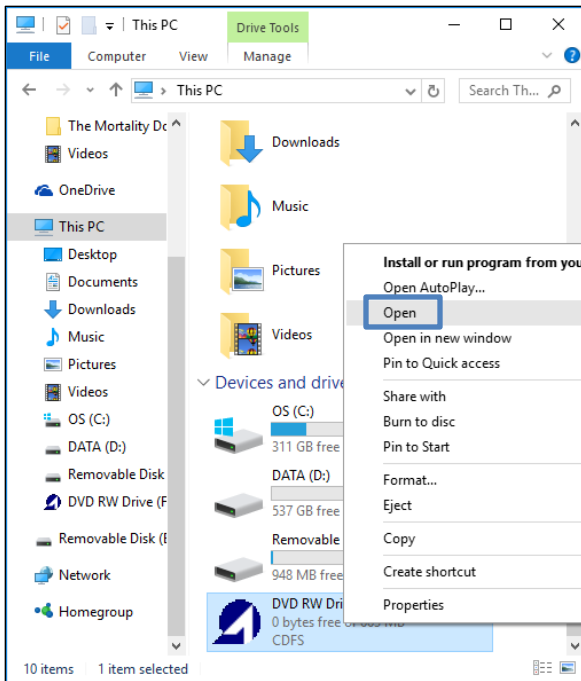
6. Select **“OK”**



7. Restart the computer.

8. Run as Administrator

- Once computer has restarted after the DSE has been disabled, open File Explorer (*Click on Windows start menu, Select File Explorer from List*) **(Make sure Installation Disk is Loaded)**
- **Select** This PC from the list
- Right click on the Accutome UBM software disk and select **Open**
 - Locate **Setup**
 - Right click on **Setup** and select **Run as Administrator**



9. Follow the installation prompts until installation is complete.

For assistance with the device upgrade or any other questions please feel free to contact Accutome diagnostic support at info@accutome.com or 610-889-0200.